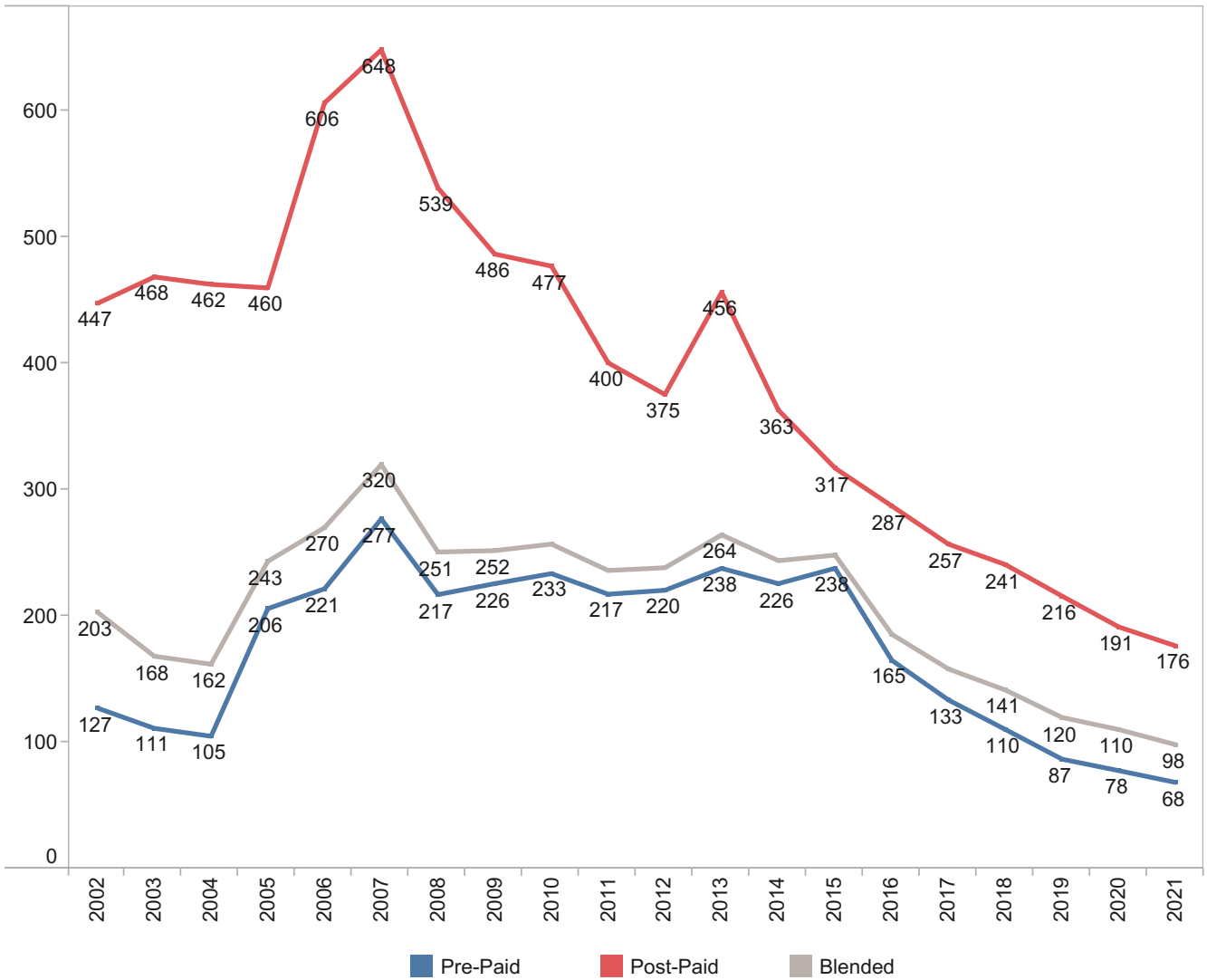


Mobile MOU (Minute/Month)



หมายเหตุ : ข้อมูล ณ วันที่ 15 ก.พ. 65

Mobile MOU (Minute/Month)

		Q1	Q2	Q3	Q4
2002	Pre-Paid	141	130	131	127
	Post-Paid	392	419	441	447
	Blended	248	230	217	203
2003	Pre-Paid	125	122	105	111
	Post-Paid	457	465	465	468
	Blended	193	185	166	168
2004	Pre-Paid	117	103	101	105
	Post-Paid	502	474	457	462
	Blended	184	165	159	162
2005	Pre-Paid	108	166	205	206
	Post-Paid	457	434	441	460
	Blended	163	208	240	243
2006	Pre-Paid	228	308	237	221
	Post-Paid	513	572	610	606
	Blended	269	341	283	270
2007	Pre-Paid	277	274	264	277
	Post-Paid	663	598	615	648
	Blended	335	320	310	320
2008	Pre-Paid	245	240	232	217
	Post-Paid	621	579	551	539
	Blended	283	274	265	251
2009	Pre-Paid	215	207	208	226
	Post-Paid	532	487	484	486
	Blended	248	207	236	252
2010	Pre-Paid	229	226	227	233

หมายเหตุ : ข้อมูล ณ วันที่ 15 ก.พ. 65