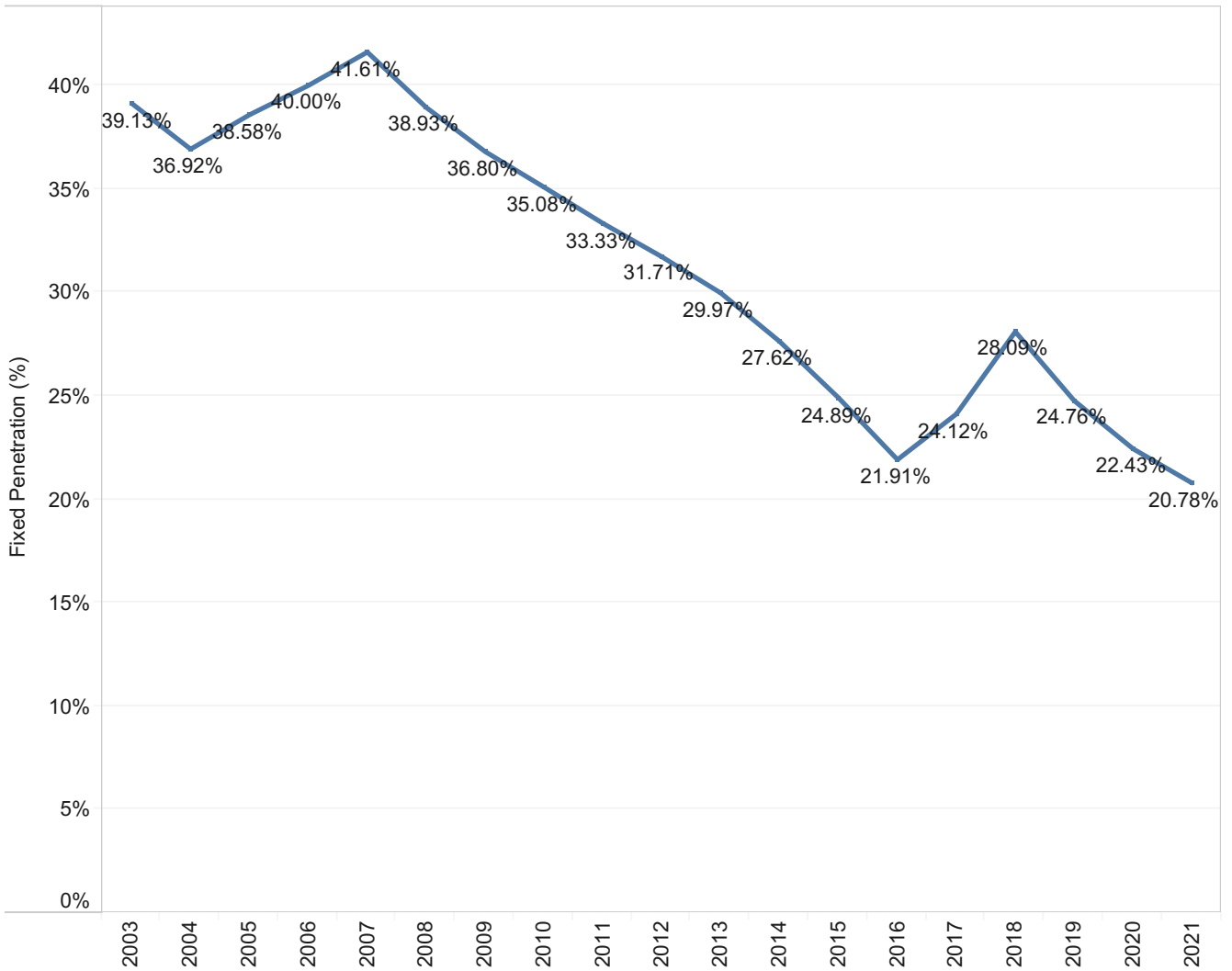


Fixed Line Penetration per Household (%)



หมายเหตุ : ข้อมูล ณ วันที่ 15 ก.พ. 65

Summary Chart

Summary Table

Fixed Line Penetration per Household (%)

	Q1	Q2	Q3	Q4
2003				39.13%
2004				36.92%
2005				38.58%
2006				40.00%
2007			33.23%	41.61%
2008	39.35%	39.31%	37.93%	38.93%
2009	37.61%	37.21%	37.01%	36.80%
2010	36.14%	35.99%	35.63%	35.08%
2011	34.70%	34.31%	33.84%	33.33%
2012	32.81%	32.50%	32.12%	31.71%
2013	31.20%	30.73%	30.35%	29.97%
2014	28.97%	28.49%	28.02%	27.62%
2015	26.24%	25.82%	25.41%	24.89%
2016	24.22%	23.56%	22.92%	21.91%
2017	25.29%	24.16%	23.99%	24.12%
2018	31.49%	31.33%	29.08%	28.09%
2019	40.11%	39.51%	39.52%	24.76%
2020	24.34%	23.85%	23.33%	22.43%
2021	22.10%	21.53%	21.16%	20.78%

หมายเหตุ : ข้อมูล ณ วันที่ 15 ก.พ. 65